



# FREEWAY CLOSURES ALERT: June 5-7, 2024

## I-215 / Holland Road Overpass



LOCATION	CONSTRUCTION ACTIVITIES
1 Holland Rd between Antelope Rd and Hanover Ln	<ul style="list-style-type: none"> <li>Continue to install/extend the waterline.</li> <li>Continue to pour concrete in the MSE wall barrier slabs.</li> <li>Begin to remove the bridge falsework.</li> </ul>
2 Holland Rd between I-215 and Haun Rd	<ul style="list-style-type: none"> <li>Continue to install/extend the waterline.</li> <li>Continue multiple utility relocations (by others).</li> </ul>
3 I-215 /Holland Rd Bridge: Holland Rd between Haun Rd and Antelope Rd	<ul style="list-style-type: none"> <li>Continue to remove the bridge falsework.</li> <li>Continue to remove the bridge overhang formwork (on the side of the bridge).</li> </ul>



### FULL NB FREEWAY CLOSURES

June 5 - 7, 2024

#### FULL NORTHBOUND I-215 FREEWAY CLOSURES

2 Wed.-Thurs., June 5 - 6 from from 8:30 pm - 4 am	2 Friday, June 7 from 9:30 pm - 6 am		
FREEWAY LANE	CLOSED	OPEN	DETOUR
<ul style="list-style-type: none"> <li>Northbound I-215 from Scott Rd to Newport Rd</li> </ul>	<ul style="list-style-type: none"> <li>All lanes will be closed.</li> </ul>	<ul style="list-style-type: none"> <li>No lanes will be open.</li> </ul>	<ul style="list-style-type: none"> <li>Exit Scott Rd to Antelope Rd to reenter northbound I-215 at Newport Rd.</li> </ul>



### ALTERNATING SB FREEWAY CLOSURES

June 5-7, 2024

#### ALTERNATING SOUTHBOUND I-215 FREEWAY CLOSURES

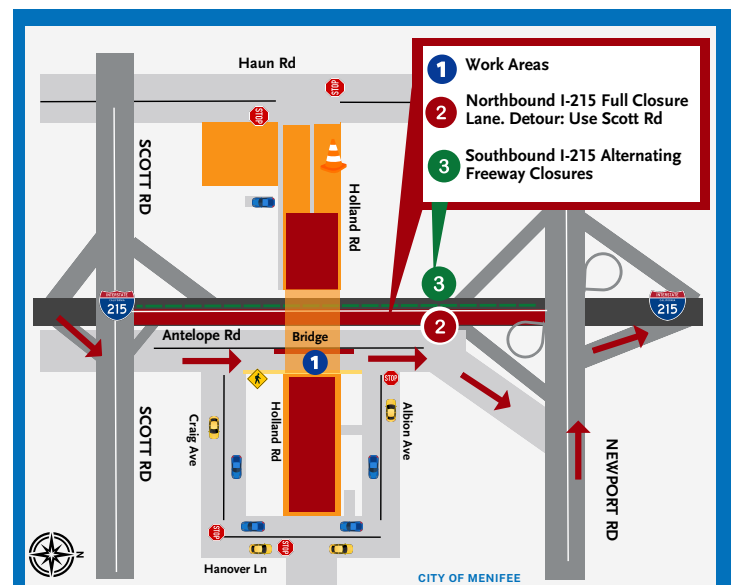
3 Wed.-Thurs., June 5 - 6 from 9 pm - 5 am	3 Friday, June 7 from 9 pm - 6 am	
FREEWAY LANE	CLOSED	OPEN
<ul style="list-style-type: none"> <li>Southbound I-215 from Newport Rd to Scott Rd</li> </ul>	<ul style="list-style-type: none"> <li>Alternating freeway lanes. Up to two lanes will be closed per direction at any time.</li> </ul>	<ul style="list-style-type: none"> <li>At least one lane will be open.</li> <li>No detour required. Expect delays.</li> </ul>

#### WHAT TO EXPECT

- Pedestrian access:
  - CLOSED:** Holland Rd.
  - OPEN:** Antelope Rd and Hanover Ln.
- Motorists can expect traffic delays.
  - Drive with caution throughout the project area and allow extra time to reach your destination.
- Water trucks will be used to maintain dust control during construction.
- Schedule is subject to change based on weather, or unexpected events.
- Businesses are **OPEN** during construction.

#### WORKING HOURS

- Daytime, Mon.-Fri., from 6 am to 4 pm
- Freeway closures are subject to cancellation without notice.



SCAN ME

(951) 200-4146  
[hollandoverpass.com](http://hollandoverpass.com)  
[info@hollandoverpass.com](mailto:info@hollandoverpass.com)

TEXT Updates: Text HOLLAND to 41372  
 EMAIL Updates: Text HOLLAND to 66866