



FREEWAY ALERT: November 27 - December 1



FULL SOUTHBOUND I-215 FREEWAY CLOSURES

1 Monday-Thursday, November 27 - 30	• Southbound I-215 from 8:30 pm - 4 am		
1 Friday, December 1	• Southbound I-215 from 9:30 pm - 6 am		
FREEWAY LANE	CLOSED	OPEN	DETOUR
1 Southbound I-215 from Newport Rd to Scott Rd	• All lanes will be closed.	• No lanes will be open.	• Exit Newport Rd to Haun Rd to reenter Southbound I-215 at Scott Rd.

ALTERNATING NORTHBOUND I-215 FREEWAY CLOSURES

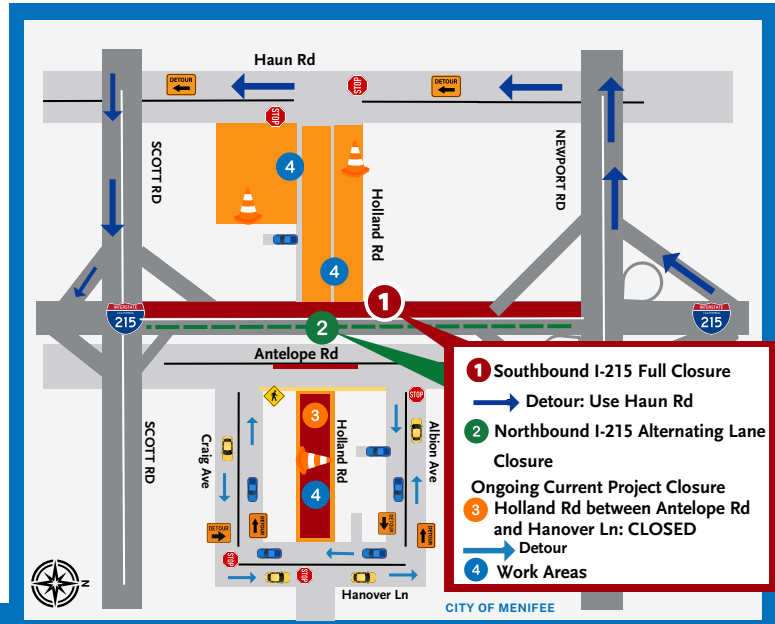
2 Monday-Thursday, November 27 - 30	• Northbound I-215 from 9 pm - 5 am	
2 Friday, December 1	• Northbound I-215 from 9 pm - 6 am	
FREEWAY LANE	CLOSED	OPEN
2 Northbound I-215 from Scott Rd to Newport Rd	• Alternating freeway lanes. Up to two lanes will be closed per direction at any time.	• At least one lane will be open. • No detour required. Expect delays.

ONGOING ROADWAY CLOSURE	CLOSED	OPEN	DATE
3 Holland Rd between Antelope Rd and Hanover Ln	• Holland Rd is fully CLOSED .	• No lanes will remain open.	• 24/7

LOCATION	CONSTRUCTION ACTIVITIES
4 Holland Rd between Antelope Rd and Hanover Ln	• Continue multiple utility relocations (by others). • Construct MCE retaining walls.
4 Holland Rd between I-215 and Haun Rd	• Continue grading operation for bridge embankment and roadway. • Continue utility relocations (by others).
4 Northbound/Southbound I-215 and Antelope Rd	• Continue installing the bridge falsework.

WHAT TO EXPECT

- Motorists can expect traffic delays.
 - Drive with caution throughout the project area and allow extra time to reach your destination.
- Water trucks will be used to maintain dust control during construction.
- Expect to see large equipment and construction noise.
- Schedule is subject to change based on weather, or unexpected events.
- Businesses are **OPEN** during construction.



(951) 200-4146
hollandoverpass.com
info@hollandoverpass.com

TEXT Updates: Text HOLLAND to 74121
 EMAIL Updates: Text HOLLAND to 66866