



# FREEWAY ALERT: November 13-15

## I-215 / Holland Road Overpass



### FULL NORTHBOUND I-215 FREEWAY CLOSURES

<b>1</b> Monday - Wednesday, November 13-15		• Northbound I-215 from 9:30 pm - 5 am	
FREEWAY LANE	CLOSED	OPEN	DETOUR
<b>1</b> Northbound I-215 from Scott Rd to Newport Rd	• All lanes will be closed.	• No lanes will be open.	• Exit Scott Rd to Antelope Rd to reenter northbound I-215 at Newport Rd.

### ALTERNATING SOUTHBOUND I-215 FREEWAY LANE CLOSURES

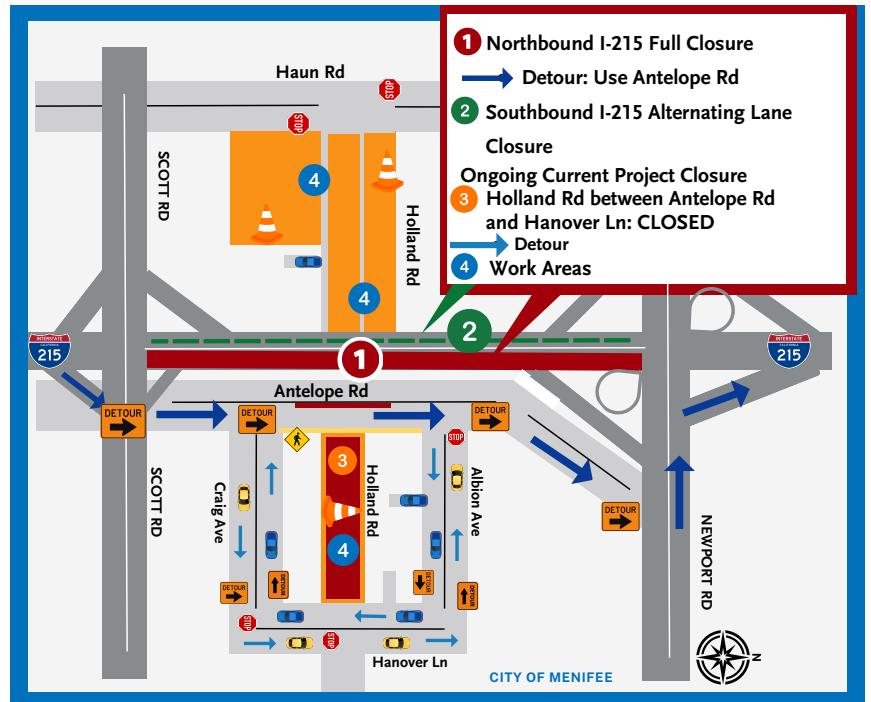
<b>2</b> Monday - Wednesday, November 13-15		• Southbound I-215 from 8 pm - 4 am	
FREEWAY LANE	CLOSED	OPEN	
<b>2</b> Southbound I-215 from Newport Rd to Scott Rd	• Alternating freeway lanes. Up to two lanes will be closed per direction at any time.	• At least one lane will be open.	• No detour required. Expect delays.

ONGOING ROADWAY CLOSURE	CLOSED	OPEN	DATE
<b>3</b> Holland Rd between Antelope Rd and Hanover Ln	• Holland Rd is fully <b>CLOSED</b> .	• No lanes will remain open.	• 24/7

LOCATION	CONSTRUCTION ACTIVITIES
<b>4</b> Holland Rd between Antelope Rd and Hanover Ln	• Continue multiple utility relocations (by others)
<b>4</b> Holland Rd between I-215 and Haun Rd	• Continue grading operation for bridge embankment and roadway. • Continue utility relocations (by others).
<b>4</b> Northbound/Southbound I-215 and Antelope Rd	• Continue installing the bridge false work.

### WHAT TO EXPECT

- Motorists can expect traffic delays.
  - Drive with caution throughout the project area and allow extra time to reach your destination.
- Water trucks will be used to maintain dust control during construction.
- Expect to see large equipment and construction noise.
- Schedule is subject to change based on weather, or unexpected events.
- Businesses are **OPEN** during construction.



(951) 200-4146  
 hollandoverpass.com  
 info@hollandoverpass.com

TEXT Updates: Text HOLLAND to 74121  
 EMAIL Updates: Text HOLLAND to 66866