

CONSTRUCTION NOTICE: October 23-27

I-215 / Holland Road Overpass



FREEWAY FULL CLOSURE AND LANE RESTRICTIONS - A separate Freeway Alert is available.

1 Monday, October 23	<ul style="list-style-type: none"> Southbound I-215: 8 pm - 4 am Northbound I-215: 9 pm - 5 am 	<ul style="list-style-type: none"> Alternating freeway lanes. Up to two lanes will be closed per direction at any time. At least one lane will remain open.
1 Tuesday - Thursday, October 24 - 26	<ul style="list-style-type: none"> Southbound I-215: 8 pm - 4 am 	<ul style="list-style-type: none"> Up to two lanes will be closed per direction at any time. At least one lane will remain open.
1 Friday, October 27	<ul style="list-style-type: none"> Southbound I-215: 11 pm - 6 am 	<ul style="list-style-type: none"> Up to two lanes will be closed per direction at any time. At least one lane will remain open.
2 Tuesday - Thursday, October 24 - 26	<ul style="list-style-type: none"> Northbound I-215: 9:30 pm - 5 am 	<ul style="list-style-type: none"> Full Closure: Northbound I-215 from Scott Rd to Newport. Follow detour.
2 Friday, October 27	<ul style="list-style-type: none"> Northbound I-215: 11 pm - 6 am 	<ul style="list-style-type: none"> Full Closure: Northbound I-215 from Scott Rd to Newport. Follow detour.

ROADWAY CLOSURES	CLOSED	OPEN
3 Holland Rd between Antelope Rd and Hanover Ln	<ul style="list-style-type: none"> Holland Rd is CLOSED. 	<ul style="list-style-type: none"> No lanes are open.

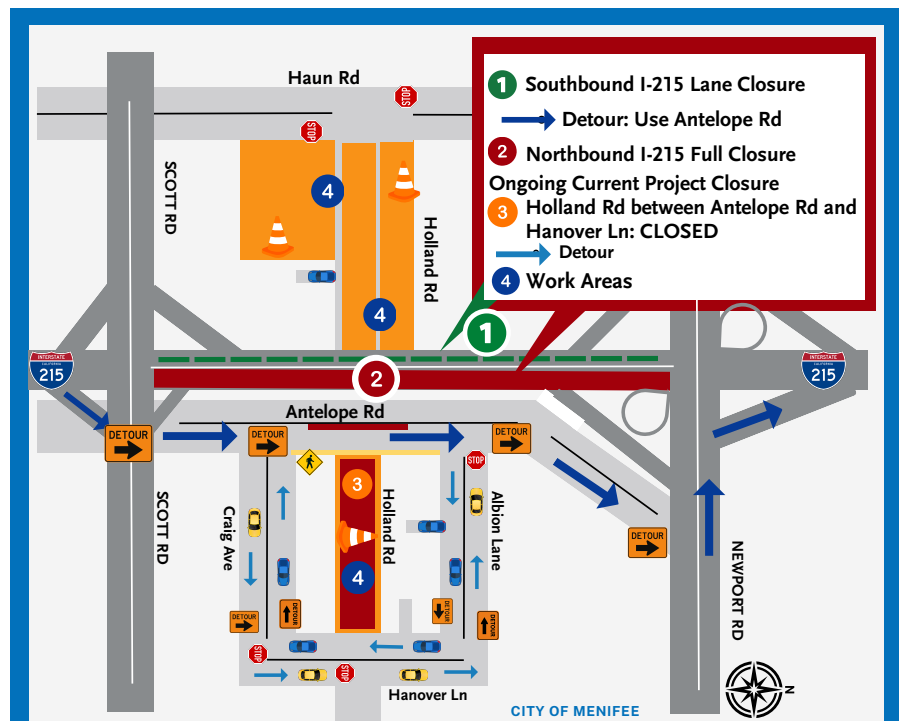
LOCATION	CONSTRUCTION ACTIVITIES
4 Holland Rd between Antelope Rd and Hanover Ln	<ul style="list-style-type: none"> Continue multiple utility relocations (by others)
4 Holland Rd between I-215 and Haun Rd	<ul style="list-style-type: none"> Continue grading operation for bridge embankment and roadway. Continue utility relocations (by others).
4 Between the Northbound/Southbound I-215	<ul style="list-style-type: none"> Continue to construct bent (2) in the median.

WHAT TO EXPECT

- Pedestrian access:
 - CLOSED:** Holland Rd.
 - OPEN:** Antelope Rd and Hanover Ln.
- Motorists can expect traffic delays.
- Water trucks will be used to maintain dust control during construction.
- Expect to see large equipment and construction noise.
- Schedule is subject to change based on weather, or unexpected events.

WORKING HOURS

- Daytime, Mon.-Fri., from 6 am to 4 pm
- Freeway closures are subject to cancellation without notice.



SCAN ME

(951) 200-4146
hollandoverpass.com
info@hollandoverpass.com

TEXT Updates: Text HOLLAND to 74121
 EMAIL Updates: Text HOLLAND to 66866