



# FREEWAY ALERT: October 23-27

## I-215 / Holland Road Overpass



### ALTERNATING I-215 FREEWAY LANE CLOSURES

1 Monday, October 23	• Southbound I-215: 8 pm - 4 am • Northbound I-215: 9 pm - 5 am	
1 Tuesday - Thursday, October 24 -26	• Southbound I-215: 8 pm - 4 am	
1 Friday, October 27	• Southbound I-215: 11 pm - 6 am	
FREEWAY LANE	CLOSED	OPEN
1 Northbound/ Southbound I-215 from Newport Rd to Scott Rd	• Alternating freeway lanes. Up to two lanes will be closed per direction at any time.	• At least one lane in each direction will be open. • No detour required. Expect delays.

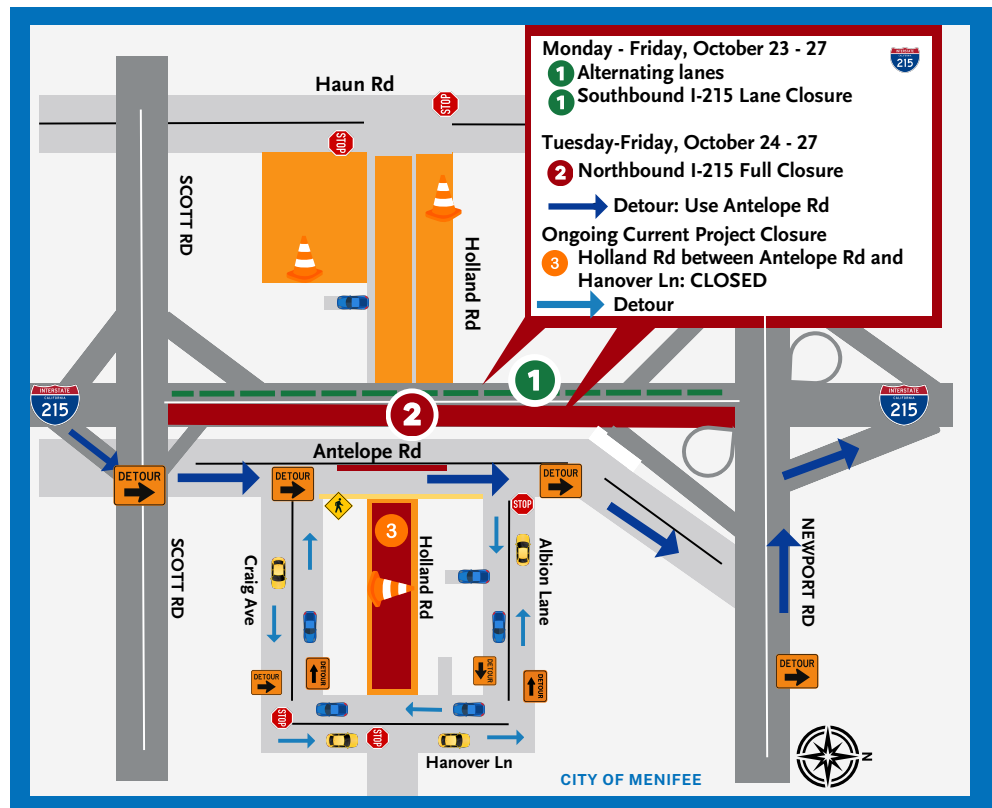
### FULL NORTHBOUND I-215 FREEWAY CLOSURES

2 Tuesday-Thursday, October 24-26	• Northbound I-215 from 9:30 pm - 5 am		
2 Friday, October 27	• Northbound I-215 from 11 pm - 6 am		
FREEWAY LANE	CLOSED	OPEN	DETOUR
2 Northbound I-215 from Scott Rd to Newport Rd	• All lanes will be closed.	• No lanes will be open.	• Exit Scott Rd to Antelope Rd to reenter northbound I-215 at Newport Rd.

ONGOING ROADWAY CLOSURE	CLOSED	OPEN	DATE
3 Holland Rd between Antelope Rd and Hanover Ln	• Holland Rd is fully <b>CLOSED</b> .	• No lanes will remain open.	• 24/7

### WHAT TO EXPECT

- Motorists can expect traffic delays.
  - Drive with caution throughout the project area and allow extra time to reach your destination.
- Water trucks will be used to maintain dust control during construction.
- Expect to see large equipment and construction noise.
- Schedule is subject to change based on weather, or unexpected events.
- Businesses are **OPEN** during construction.



(951) 200-4146  
[hollandoverpass.com](http://hollandoverpass.com)  
[info@hollandoverpass.com](mailto:info@hollandoverpass.com)

TEXT Updates: Text HOLLAND to 74121

EMAIL Updates: Text HOLLAND to 66866